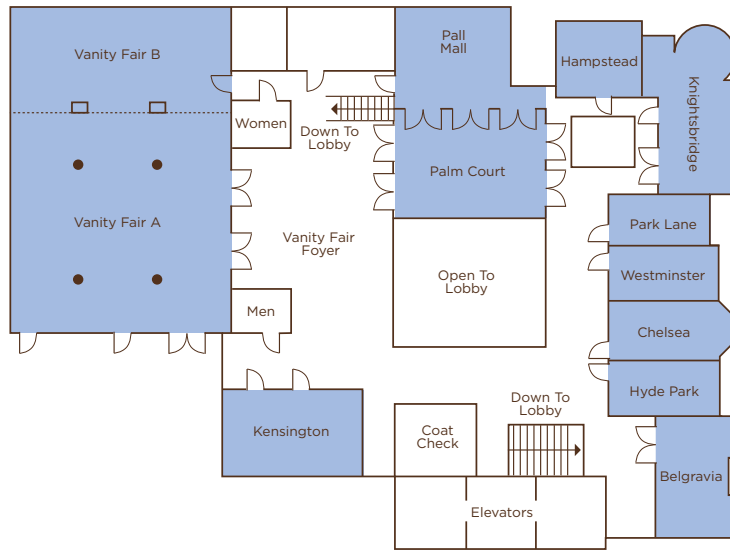
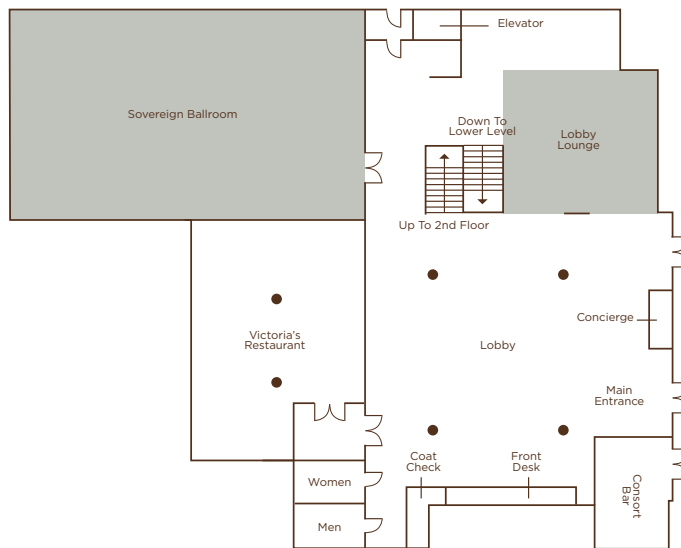


# THE OMNI KING EDWARD HOTEL MEETING SPACE

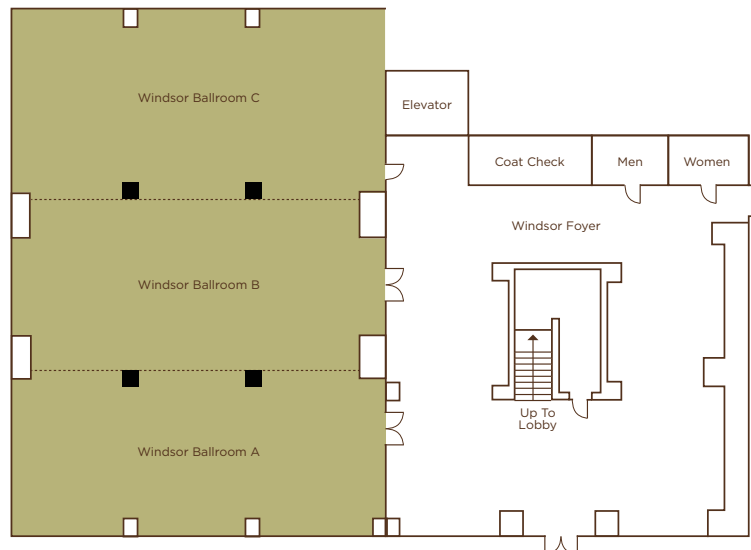
## SECOND LEVEL



## LOBBY LEVEL



## LOWER LEVEL



## THE OMNI KING EDWARD HOTEL MEETING ROOM CAPACITY

	SQUARE FOOTAGE	DIMENSIONS L x W	CEILING HEIGHT	THEATER	CLASS-ROOM 18"	BANQUET	RECEPTION	HOLLOW SQUARE	U-SHAPE	BOARD-ROOM	DINNER/DANCE
<b>MEZZANINE</b>											
BOARDROOM A	256	18' x 14'	9'	—	—	—	—	—	—	10	—
BOARDROOM B	201	15' x 13'	10'	—	—	—	—	—	—	8	—
BOARDROOM C	226	15'6" x 14'	10'	—	—	—	—	—	—	8	—
<b>SECOND LEVEL</b>											
BELGRAVIA	696	35'6" x 20'	9'	60	30	40	65	32	28	28	—
CHELSEA	561	32' x 17'6"	10'	35	21	30	40	24	20	20	—
HAMPSTEAD	451	21'6" x 21'	10'6"	30	18	20	30	20	16	14	—
HYDE PARK	477	28'6" x 16'6"	10'	30	18	20	40	24	20	20	—
KENSINGTON	860	25' x 34'	10'6"	65	42	50	70	36	32	32	30
KNIGHTSBRIDGE	982	44'6" x 22'	10'6"	70	45	60	90	38	34	34	50
PALL MALL/PALM COURT	1974	30'6" x 67'	10'	—	—	120	160	—	—	—	80
PALL MALL	881	30' x 29'	10'	50	30	40	60	28	24	18	—
PALM COURT	1080	30'6" x 35'6"	9'6"	—	—	80	100	—	—	—	—
PARK LANE	384	27'6" x 14'	10'	—	—	—	—	—	—	18	—
VANITY FAIR BALLROOM	5279	55' x 96'	11'6"	420	180	370	500	62	51	44	290
VANITY FAIR A	3850	55' x 70'	11'6"	320	150	290	350	62	51	44	200
VANITY FAIR B	1308	55' x 24'	11'6"	100	48	80	150	48	44	40	—
WESTMINSTER	419	26'6" x 15'	10'	—	—	—	—	—	—	18	—
<b>LOWER LEVEL</b>											
WINDSOR BALLROOM	3402	63' x 54'	9'	160	120	210	300	73	65	46	160
WINDSOR A	973	18' x 54'	9'	60	36	50	90	44	42	46	—
WINDSOR B	1134	21' x 54'	9'	80	54	80	110	48	44	46	—
WINDSOR C	1297	24' x 54'	9'	76	54	80	125	48	44	46	—
<b>LOBBY</b>											
SOVEREIGN BALLROOM	3312	72' x 46'	24'	300	150	240	400	80	70	80	180
LOBBY LOUNGE	1543	40'6" x 38'	9'	40	20	70	150	24	20	20	60

