

ABOUT THE OMNI KING EDWARD HOTEL



A RICH AND ELEGANT HISTORY

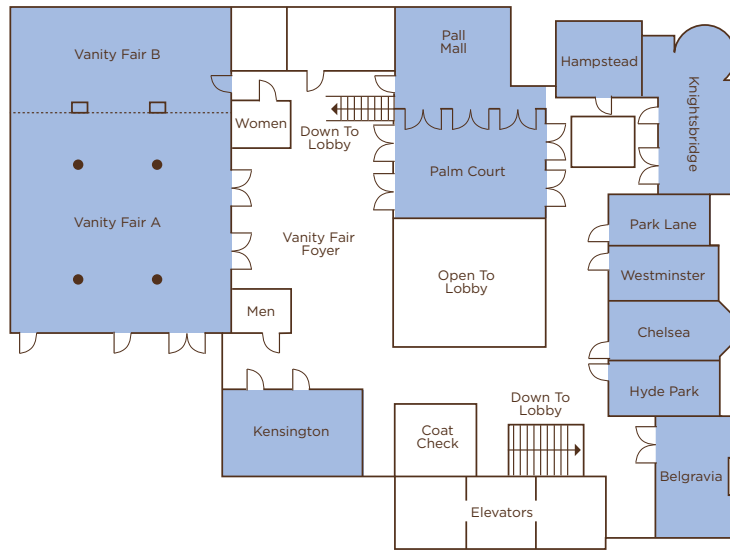
The Omni King Edward Hotel was built in 1903 and was Toronto's first luxury hotel. For over a century, the hotel has been the first choice of Toronto's elite, convention attendees, political figures and business travelers. That tradition of excellence continues today for guests looking for a unique and timeless setting for events, receptions, meetings, weddings and more.



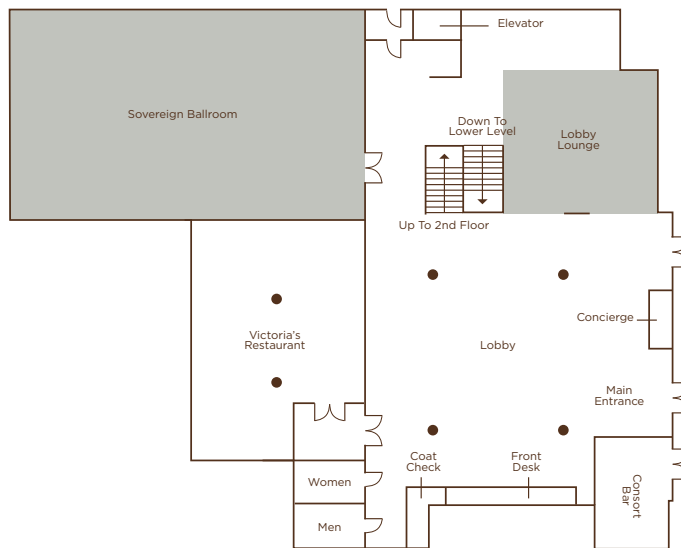
- 301 elegantly appointed, oversized guestrooms and suites
- 22,000 square feet of flexible event, banquet, convention and meeting space, which includes 12 spacious meeting rooms and three stylish grand ballrooms.
- State-of-the-art audio visual services
- A dedicated catering staff offering exquisite menu options and inspirational cuisine
- Victoria's Restaurant – Offers an inventive twist on classic cuisine, utilizing locally sourced, seasonal ingredients.
- The Consort Bar – An elegant atmosphere in which to enjoy lunch or dinner complemented with an extensive menu of wines and signature cocktails.
- Afternoon Tea – This tea service is designed for the aristocratic palate, with aromatic and exquisitely blended teas.
- Guest Room Dining – for guests wishing to enjoy outstanding cuisine in the privacy of their rooms, in-room dining is available 24-hours a day.
- Fitness Center – Renew your body and mind in our 24 hour accessible fitness facility

THE OMNI KING EDWARD HOTEL MEETING SPACE

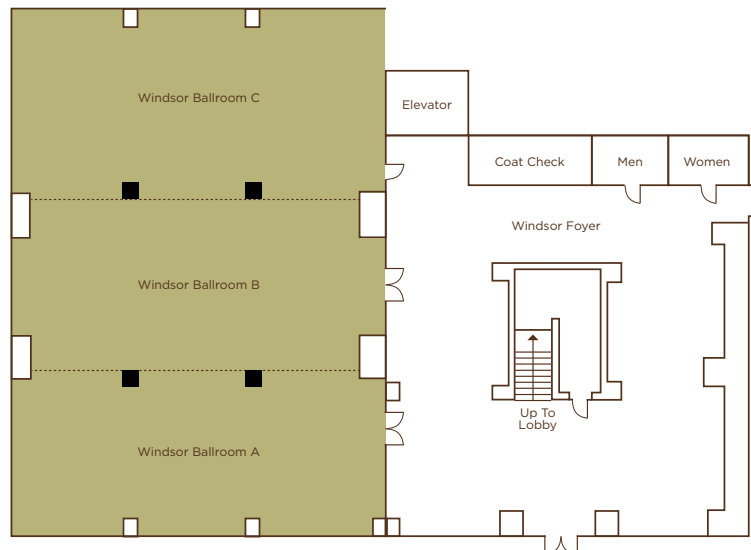
SECOND LEVEL



LOBBY LEVEL



LOWER LEVEL



THE OMNI KING EDWARD HOTEL MEETING ROOM CAPACITY

| | SQUARE FOOTAGE | DIMENSIONS L x W | CEILING HEIGHT | THEATER | CLASS-ROOM 18" | BANQUET | RECEPTION | HOLLOW SQUARE | U-SHAPE | BOARD-ROOM | DINNER/DANCE |
|----------------------|----------------|------------------|----------------|---------|----------------|---------|-----------|---------------|---------|------------|--------------|
| MEZZANINE | | | | | | | | | | | |
| BOARDROOM A | 256 | 18' x 14' | 9' | — | — | — | — | — | — | 10 | — |
| BOARDROOM B | 201 | 15' X 13' | 10' | — | — | — | — | — | — | 8 | — |
| BOARDROOM C | 226 | 15'6" x 14' | 10' | — | — | — | — | — | — | 8 | — |
| SECOND LEVEL | | | | | | | | | | | |
| BELGRAVIA | 696 | 35'6" x 20' | 9' | 60 | 30 | 40 | 65 | 32 | 28 | 28 | — |
| CHELSEA | 561 | 32' x 17'6" | 10' | 35 | 21 | 30 | 40 | 24 | 20 | 20 | — |
| HAMPSTEAD | 451 | 21'6" x 21' | 10'6" | 30 | 18 | 20 | 30 | 20 | 16 | 14 | — |
| HYDE PARK | 477 | 28'6" x 16'6" | 10' | 30 | 18 | 20 | 40 | 24 | 20 | 20 | — |
| KENSINGTON | 860 | 25' x 34' | 10'6" | 65 | 42 | 50 | 70 | 36 | 32 | 32 | 30 |
| KNIGHTSBRIDGE | 982 | 44'6" x 22' | 10'6" | 70 | 45 | 60 | 90 | 38 | 34 | 34 | 50 |
| PALL MALL/PALM COURT | 1974 | 30'6" x 67' | 10' | — | — | 120 | 160 | — | — | — | 80 |
| PALL MALL | 881 | 30' x 29' | 10' | 50 | 30 | 40 | 60 | 28 | 24 | 18 | — |
| PALM COURT | 1080 | 30'6" x 35'6" | 9'6" | — | — | 80 | 100 | — | — | — | — |
| PARK LANE | 384 | 27'6" x 14' | 10' | — | — | — | — | — | — | 18 | — |
| VANITY FAIR BALLROOM | 5279 | 55' x 96' | 11'6" | 420 | 180 | 370 | 500 | 62 | 51 | 44 | 290 |
| VANITY FAIR A | 3850 | 55' x 70' | 11'6" | 320 | 150 | 290 | 350 | 62 | 51 | 44 | 200 |
| VANITY FAIR B | 1308 | 55' x 24' | 11'6" | 100 | 48 | 80 | 150 | 48 | 44 | 40 | — |
| WESTMINSTER | 419 | 26'6" x 15' | 10' | — | — | — | — | — | — | 18 | — |
| LOWER LEVEL | | | | | | | | | | | |
| WINDSOR BALLROOM | 3402 | 63' x 54' | 9' | 160 | 120 | 210 | 300 | 73 | 65 | 46 | 160 |
| WINDSOR A | 973 | 18' x 54' | 9' | 60 | 36 | 50 | 90 | 44 | 42 | 46 | — |
| WINDSOR B | 1134 | 21' x 54' | 9' | 80 | 54 | 80 | 110 | 48 | 44 | 46 | — |
| WINDSOR C | 1297 | 24' x 54' | 9' | 76 | 54 | 80 | 125 | 48 | 44 | 46 | — |
| LOBBY | | | | | | | | | | | |
| SOVEREIGN BALLROOM | 3312 | 72' x 46' | 24' | 300 | 150 | 240 | 400 | 80 | 70 | 80 | 180 |
| LOBBY LOUNGE | 1543 | 40'6" x 38' | 9' | 40 | 20 | 70 | 150 | 24 | 20 | 20 | 60 |

